

Specifications

| Model | Z-62/40 | |
|--|-----------------|------------------|
| Measurements | Metric | US |
| Working height maximum* | 20.87 m | 67 ft 11 in |
| Platform height maximum | 18.87 m | 61 ft 11 in |
| Horizontal reach maximum | 12.47 m | 40 ft 11 in |
| Up and over clearance maximum | 8.13 m | 26 ft 8 in |
| A Platform length - 8 ft / 6 ft model | 0.91 m / 0.76 m | 3 ft / 2 ft 6 in |
| B Platform width - 8 ft / 6 ft model | 2.44 m / 1.83 m | 8 ft / 6 ft |
| C Height - stowed | 2.56 m | 8 ft 6 in |
| Height - transport (jib tucked under) | 2.90 m | 9 ft 6 in |
| D Length - stowed | 9.25 m | 30 ft 4 in |
| Length - transport (jib tucked under) | 7.58 m | 24 ft 10.5 in |
| E Width | 2.49 m | 8 ft 2 in |
| F Wheelbase | 2.51 m | 8 ft 3 in |
| G Ground clearance - center | 0.37 m | 1 ft 2.5 in |

Productivity

| | | |
|--------------------------------|---------------------|------------|
| Lift capacity | 227 kg | 500 lbs |
| Platform rotation | 160° | 160° |
| Vertical jib rotation | 135° | 135° |
| Turntable rotation | 360° continuous | |
| Turntable tailswing | zero | zero |
| Drive speed - stowed | 4.8 km/h | 3.0 mph |
| Drive speed - raised** | 1.1 km/h | 0.68 mph |
| Gradeability - 2WD - stowed*** | 25% | 25% |
| Gradeability - 4WD - stowed*** | 45% | 45% |
| Turning radius - inside | 2.36 m | 7 ft 9 in |
| Turning radius - outside | 5.54 m | 18 ft 2 in |
| Controls | 12V DC proportional | |
| Tyres | 355/55D 625 | |

Power

| | | |
|-------------------------|--|--------|
| Power source | Deutz D2011L03i 3-cylinder diesel 35.8 kW (48 hp) Perkins 404D-22 4-cylinder diesel 38.0 kW (51 hp) | |
| Auxiliary power unit | 12V DC | 12V DC |
| Hydraulic tank capacity | 132.5 L | 35 gal |
| Fuel tank capacity | 132.5 L | 35 gal |

Sound & Vibration Levels

| | | |
|---|-----------------------|---------------------------|
| Sound pressure level (ground workstation) | 84 dBA | 84 dBA |
| Sound pressure level (platform workstation) | 75 dBA | 75 dBA |
| Vibration | <2.5 m/s ² | <8 ft 2 in/s ² |

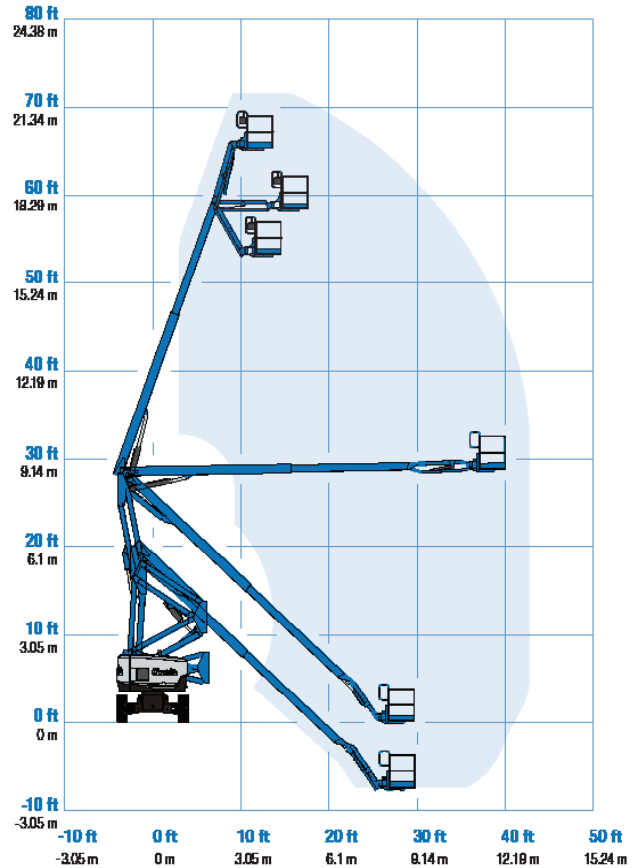
Weight****

| | | |
|----------------------------|-----------|------------|
| CE 4WD (foam filled tyres) | 10,548 kg | 23,255 lbs |
|----------------------------|-----------|------------|

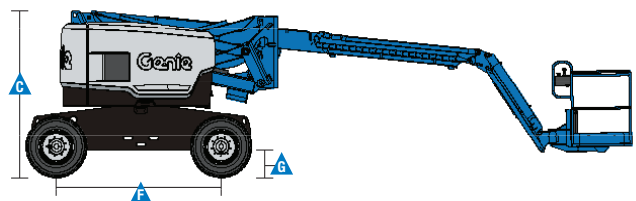
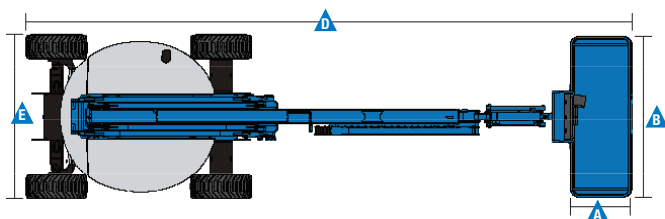
Standards Compliance

EU Directives: 2006/42/EC - Machinery
(harmonized standard EN280:2001+A2:2009); 2004/108/EC (EMC); 2000/14/EC (Outdoor Noise)

Range Of Motion Z-62/40



* The metric equivalent of working height adds 2 m to platform height. U.S. adds 6 ft to platform height.
** In lift mode (platform raised), the machine is designed to operate on firm, level surfaces only.
*** Gradeability applies to driving on slopes. See operators manual for details regarding slope ratings.
**** Weight will vary depending on options and/or country standards.



Features

| Standard Features | Easily Configured To Meet Your Needs | Options & Accessories |
|--|--|--|
| <p>Measurements</p> <ul style="list-style-type: none"> • 20.87 m (67 ft 11 in) working height • 12.47 m (40 ft 11 in) horizontal reach • 8.13 m (26 ft 8 in) up and over clearance • Up to 227 kg (500 lbs) lift capacity <p>Productivity</p> <ul style="list-style-type: none"> • Self-levelling platform • Hydraulic platform rotation • Proportional joystick controls • Telematics-Ready Connector • Thumb rocker steering • Drive enable • AC power cord to platform • Horn • Hour meter • Tilt alarm • Descent & travel alarms • Flashing beacon • 360° continuous turntable rotation • Locking turntable covers • Zero tailswing • Positive traction drive • 2 speed wheel motors • Certified load sensor <p>Power</p> <ul style="list-style-type: none"> • 12V DC auxiliary power • Engine protection package • Anti-restart engine protection • Auto engine fault shutdown • Intake air heater (Deutz engine) | <p>Platform Options</p> <ul style="list-style-type: none"> • Steel 2.44 m (8 ft) (standard) • Steel 1.83 m (6 ft) • 2.44 m (8 ft) tri-entry** <p>Jib</p> <ul style="list-style-type: none"> • 1.52 m (5 ft) jib boom <p>Engine Options</p> <ul style="list-style-type: none"> • Deutz diesel 35.8 kW (48 hp) • Perkins diesel 38 kW (51 hp) <p>Drive Options</p> <ul style="list-style-type: none"> • 2 x 4 • 4 x 4 <p>Axle Options</p> <ul style="list-style-type: none"> • Active oscillation (standard on 4WD) • Non-oscillating <p>Tyre Options</p> <ul style="list-style-type: none"> • Rough terrain air-filled (standard) • Rough terrain foam-filled • Rough terrain non-marking (air or foam-filled) • Sealant treated air-filled | <p>Productivity Options</p> <ul style="list-style-type: none"> • Platform top auxiliary rail • Weld leads to platform ⁽¹⁾ • Hydraulic oil cooler ⁽²⁾ • Air line to platform • Power to platform (incl. plug, socket and ground fault interrupt leakage on request) • Work lights package (2 on chassis, 2 on platform) • Dual axis joystick steering • Biodegradable hydraulic oil ⁽¹⁾ • Aircraft protection kit ^(1,2): platform foam padding and padded disable system • Hostile environment kit ⁽¹⁾: cylinder bellows, boom wiper seals platform and ground control box covers • Deluxe hostile environment kit ^(1,2) adds to basic kit center turntable shield, ring gear guard, tail pipe guard, engine cover flaps and air pre-cleaner • Tilt cut-out option • Track & Trace ⁽³⁾ (GPS unit providing machine location & operating information) • Panel cradle package ^(1,2) • Lockable platform control box covers • Tool tray • Operator Protective Structure • Operator Protective Alarm <p>Power Options</p> <ul style="list-style-type: none"> • Engine gauge package • AC generator packages (110V/60Hz 220V/50Hz, 3000W) ⁽¹⁾ • Hydraulic MTE Generator kit (110V/120V-220V/240V) • Diesel air intake pre-cleaner ^(1,2) • Diesel catalytic scrubber muffler ⁽¹⁾ • Low temperature cut-out module • Engine heater ⁽²⁾ • Refinery kit with spark arrestor and electric or mechanical Chalmers valve ⁽²⁾ |



⁽¹⁾ Factory-fit option only

⁽²⁾ Available on selected models only. See your Genie representative for further information.

⁽³⁾ Includes a first 2 years subscription

United Kingdom

The Maltings, Wharf Road, Grantham NG31 6BH, T: +44 800 988 3739 (toll free), Fax +44 (0)1476 584334, Email AWP-InfoEurope@terex.com
Visit www.genielift.co.uk/locations to view our global locations list.

Worldwide Manufacturing And Distribution

Australia · Brazil · Caribbean · Central America · China · France · Germany · Italy · Japan · Korea · Mexico · Russia · Southeast Asia · Spain · Sweden · United Arab Emirates · United Kingdom · United States

Effective Date: June, 2014. Product specifications and prices are subject to change without notice or obligation. The photographs and/or drawings in this document are for illustrative purposes only. Refer to the appropriate Operator's Manual for instructions on the proper use of this equipment. Failure to follow the appropriate Operator's Manual when using our equipment or to otherwise act irresponsibly may result in serious injury or death. The only warranty applicable to our equipment is the standard written warranty applicable to the particular product and sale and we make no other warranty, express or implied. Products and services listed may be trademarks, service marks or trade names of Terex Corporation and/or their subsidiaries in the USA and many other countries. Genie is a registered trademark of Terex South Dakota, Inc. © 2014 Terex Corporation.

